

Sharpsmart

CORRECT SHARPS DISPOSAL



TO AVOID NEEDLESTICK INJURY, IT IS RECOMMENDED THAT NEEDLES SHOULD NOT BE RE-CAPPED OR DE-NOTCHED AND INTRAVENOUS SPIKES OR NEEDLES SHOULD NOT BE INSERTED INTO ATTACHED PLASTIC TUBING. BE SHARP SMART, **AVOID ACTIONS THAT COULD PUT YOUR SAFETY AT RISK.**

Sharps are discarded objects or devices capable of cutting or penetrating the skin:

- ▶ Hypodermic needles
- ▶ Intravenous sets
- ▶ Pasteur Pipettes
- ▶ Broken Glass
- ▶ Scalpel blades
- ▶ Various hard plastic items such as intact amniotic membrane perforators and broken plastic pipettes



The following items should **NOT** be disposed of in this container:

- ▶ **GLOVES**
- ▶ **NON-SHARPS**
- ▶ **PACKAGING**



ALWAYS DISPOSE OF SHARPS & SHARPS SAFETY DEVICES INTO SHARPS COLLECTORS



ALWAYS CLOSE COLLECTOR BEFORE MOVING OR REMOVING



NEVER THROW SHARPS INTO COLLECTOR

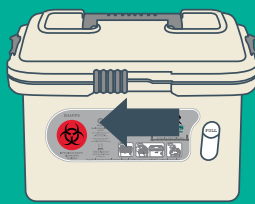


NEVER PUT HANDS INTO SHARPS COLLECTOR

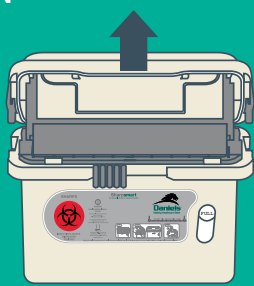
PLEASE NOTE Daniels Reusable Sharpsmart collectors **DO NOT** go into medical wastebins



OPEN

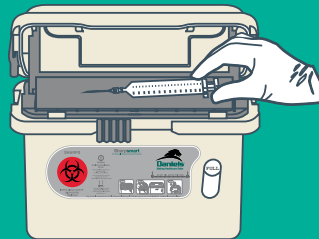


1 Slide the front lock to the left.

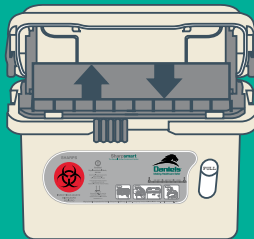


2 Lift lid until it locks open.

SYRINGE DISPOSAL

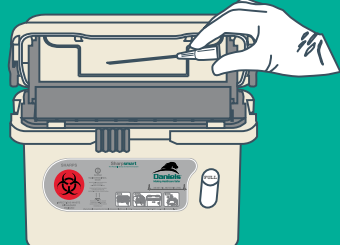


1 Drop syringes horizontally onto tray.

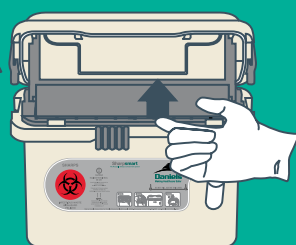


2 Tray will empty itself.

LIGHT SHARPS DISPOSAL

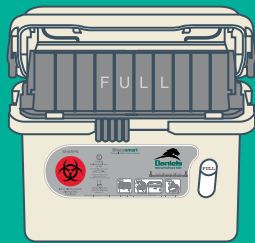


1 Drop syringes horizontally onto tray.



2 Manually lift the tray to empty.

FULL

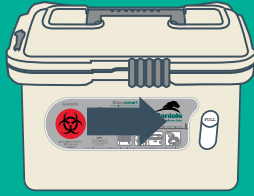


When the tray remains vertical, the collector is full.

CLOSE

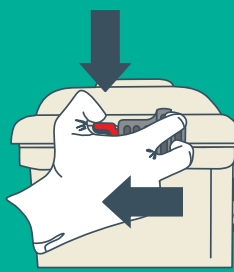


1 Press both side supports inward, and close lid.



2 Slide the front lock fully to the right.

LOCK



1 Depress red tabs.

NOTE: SIDE LOCKS ARE PERMANENT!

2 Slide locks completely forward & replace the collector.