

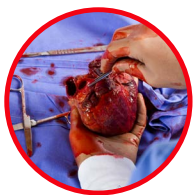
Pathological vs RMW Waste

Pathological waste: Any recognizable human or animal body part, organ or tissue.

RMW Medical waste: An item that is soaked or saturated (dripping) or dried and able to flake with blood or bodily fluids or other potentially infectious material.



Items that are defined as **Pathological Waste**



▶ Anatomical Organs



▶ Human or Animal Tissue / Biopsy Material



▶ Human or Animal Body Parts or Carcasses used for Research



▶ Surgical specimens.

Items that may be **Medical Waste**



▶ Suction Canisters and Sealed Disposable Sharps Containers



▶ Dressings, Bandages, Swabs and Gauze



▶ Gloves, Surgical Masks and Disposable PPE



▶ IV Bags and Tubing

PATHOLOGICAL WASTE CONTAINMENT



PATHOLOGICAL | Pathological (or anatomical) waste is a classification of medical waste that could contain the presence of a pathogenic agent: any type of microorganism which could cause disease. While also contained in a red container, Pathological waste must be separated from regulated medical waste and labelled appropriately.

MEDICAL WASTE CONTAINMENT



RMW | Medical waste is defined as red bag or infectious waste containing blood or bodily fluids to a saturation level that is **pourable, drippable, squeezable, or flakeable**. If the items listed to the right of this poster are not contaminated by fluids to such a level or deemed infectious, they are not classified as RMW waste and should be disposed of in normal trash.

Protected by Copyright © 2021



888 952 5580



WWW.DANIELSHEALTH.COM/EDUCATION

* **Guidance only.** Each facility should check with their local and state regulations to verify specific policy and procedures