

DANIELS HEALTH

Logistics & Storage Solutions



BULK
MOVEMENT
ACCESSORIES

Daniels Bulk Movement Accessories

Maximizing labor and movement efficiencies | Minimizing cross-contamination

From clinical to dock environment, Daniels' interchangeable accessories cater for risk-free storage and movement across an entire facility. Daniels' custom suite of internal delivery carts enable maneuverability of multiple sized collectors through tight corridors and service lifts, thereby reducing labor of service staff and minimizing burden in traffic-heavy areas. Our transporters are designed to protectively store collectors at dock level right through to on-truck transportation. The unique internal hinge design of the transporter housing ensures collectors are locked in a suspended position, eliminating risk of damage and ground contamination.

Transporters



Medium Transporter Lite | Used to safely and efficiently transport Sharpsmart collectors between Daniels' processing site and the healthcare facility.

Product Code : 2000600002

Dimensions : 73.3" (H) x 29.7" (W) x 48" (D)

Compatibility : Holds 36 x S14s or 27 x S22s or 18 x S32s; or a combination of various sizes.



Large Transporter Lite | Larger version Transporter, used to safely and efficiently transport Sharpsmart collectors between Daniels' processing site and the healthcare facility.

Product Code : 2000800002

Dimensions : 80" (H) x 41.9" (W) x 48" (D)

Compatibility : Holds 72 x S14s or 48 x S22s or 36 x S32s or a combination of various sizes.



64 Transporter Lite | For secure transportation of 64-series collectors between Daniels' processing site and the healthcare facility.

Product Code : 2000700002

Dimensions : 73.3" (H) x 29.7" (W) x 48"(D)

Compatibility : Holds up to 12 x 64-series collectors.

Delivery Carts



Collapsible Delivery Cart | Designed for use by in-hospital staff, this cart enables efficient movement of 64 Series collectors through a facility. Features a collapsible handle for efficient storage.

Product Code : 6040014000

Dimensions : 38.9" (H) x 29.2" (W) x 52.9" (D) (12.2" height when collapsed)

Compatibility : Holds up to 12 x 64-series collectors.

Did you know...

All Daniels Accessories can be viewed on www.danielshealth.com with an easy cart option to submit an online quote request.





Delivery Carts



Small Internal Delivery Cart | Designed for use by in-hospital staff. Enables the maneuverability of multiple Daniels' collectors through a facility.

Product Code : 6001606002 | **Dimensions** : 56.9" (H) x 34.3" (W) x 56.1" (D)

Features : Compact design fitted with rubber buffers and brakes to minimize noise and enhance mobility in busy hospital environments.

Compatibility : Holds 40 x S14 or 20 x S22 plus 10 x S14 or 20 x S32 or a combination of various sizes.



Large Internal Delivery Cart | Designed for use by in-hospital staff. Enables the maneuverability of multiple Daniels' collectors through a facility.

Product Code : 6001606001 | **Dimensions** : 69.4" (H) x 34.3" (W) x 82" (D)

Features : Compact design fitted with rubber buffers and brakes to minimize noise and enhance mobility in busy hospital environments.

Compatibility : Holds 80 x S14 or 48 x S22 plus 8 x S14, or 32 x S32 plus 16 x S14, or a combination of various sizes.



64 Small Internal Delivery Cart | Designed for use by in-hospital staff. Enables the maneuverability of multiple Daniels' 64-series collectors through a facility.

Product Code : 6002400000 | **Dimensions** : 56.9" (H) x 34.3" (W) x 56" (D)

Features : Compact design fitted with rubber buffers and brakes to minimize noise and enhance mobility in busy hospital environments.

Compatibility : Holds 6 x 64, plus 2 x S32 and 8 x S22, or a combination of various sizes.



64 Large Internal Delivery Cart | Designed for use by in-hospital staff. Enables the maneuverability of multiple Daniels' 64-series collectors through a facility.

Product Code : 6001900000 | **Dimensions** : 54.5" (H) x 34.3" (W) x 74" (D)

Features : Compact design fitted with rubber buffers and brakes to minimize noise and enhance mobility in busy hospital environments.

Compatibility : Holds 8 x 64 Series, plus 6 x S32 and 8 x S22, or a combination of various sizes.

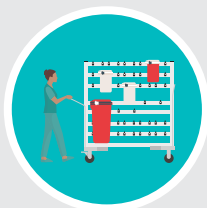
With 32 years experience leading innovative change in the management of healthcare waste across six countries, at Daniels

WE THINK DIFFERENTLY.



We have come to understand that safety, segregation and the effective cost management of healthcare waste is driven and directly influenced from within the four walls of a clinical facility... so why not start there?

Daniels have invested years of microbiological R&D and clinical research into creating products that amplify the safety and efficiencies of a healthcare environment. We don't just deal with a collector, we look at how it's mounted and secured, how it positions waste for optimal segregation and minimizes footprint in space-constrained areas; we look at how it moves through a facility in a way that is almost invisible,...



MOVEMENT

Challenge - Pressure on service elevators shared by patients and hospital staff.

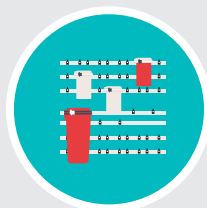
Solution - By transporting 16 collectors on a Daniels Internal Delivery Cart, you can dramatically reduce labor time and burden on elevators.



SEGREGATION

Challenge - Achieving effective segregation within a patient room.

Solution - Daniels Accessmart trolley enables co-mounting of a Sharpsmart and Medismart collector to achieve point-of-use segregation.



WALL MOUNTING

Challenge - Small utility room with limited floorspace.

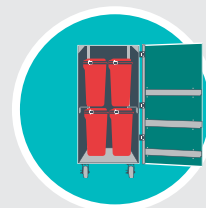
Solution - Install Wallsmart to efficiently store multiple collectors.



TROLLEY MOUNTING

Challenge - Safe effective disposal of medications in a patient environment.

Solution - Daniels brackets can be mounted directly onto a hospitals' med-cart to safely move Pharmasmart collectors from room to room.



DOCK STORAGE

Challenge - Double-stacking medical waste bins is an occupational hazard and takes up significant space in a loading dock.

Solution - Daniels transporters store up to 45 collectors in a secure, dust-free environment with minimal footprint required.

USN181015